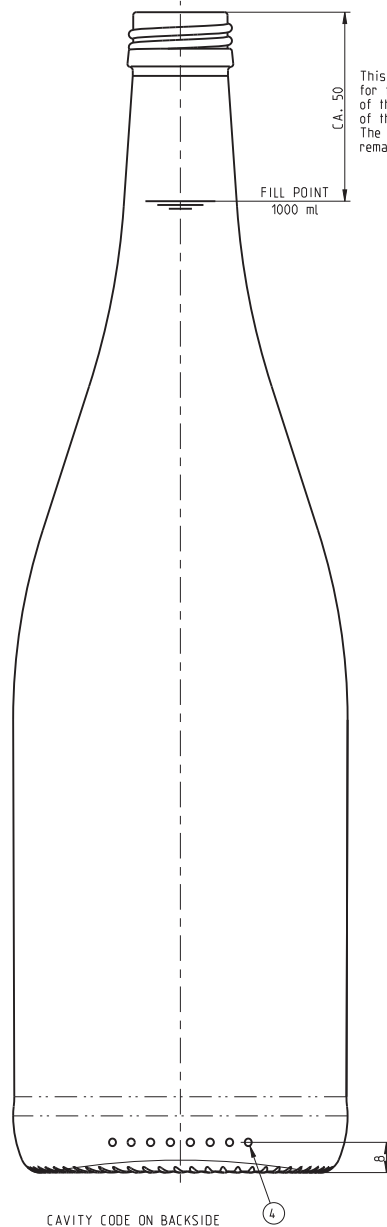
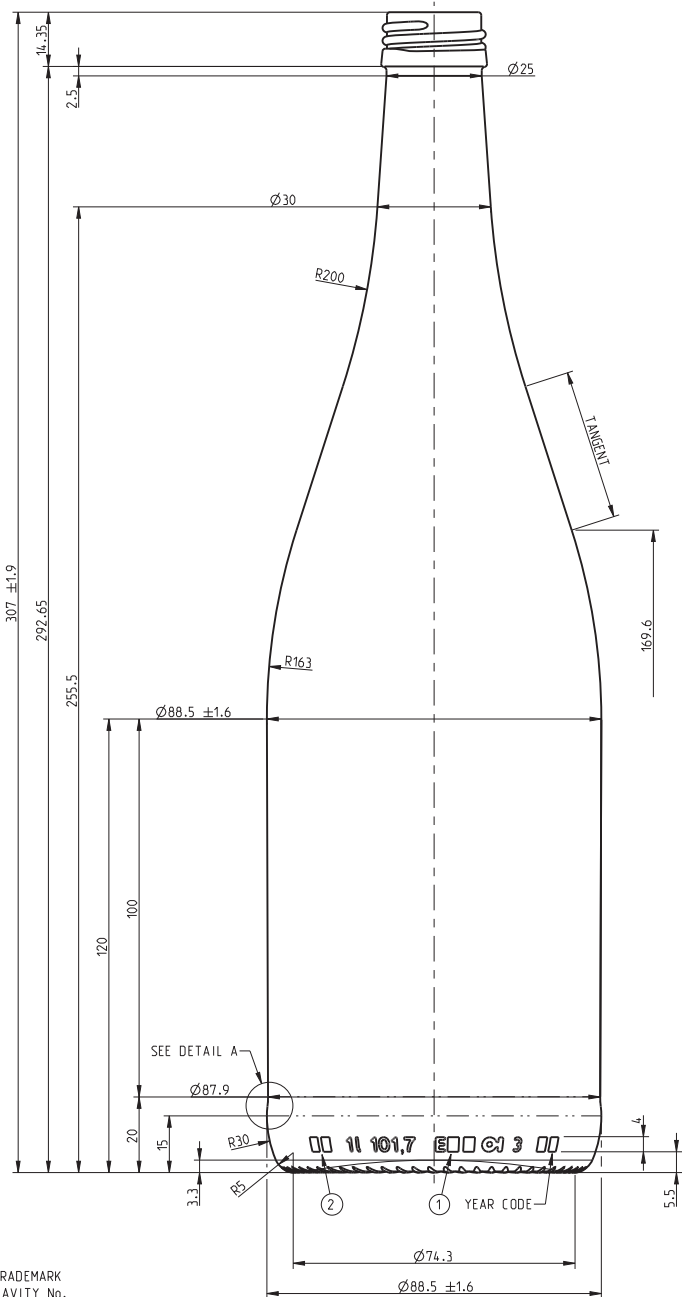
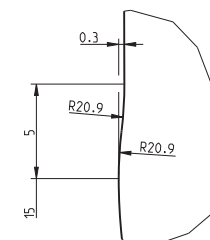
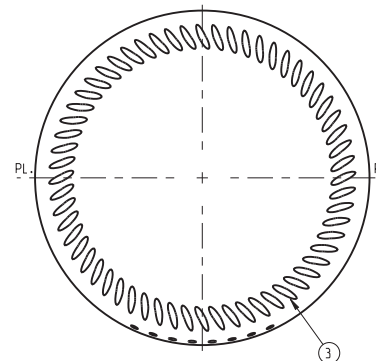


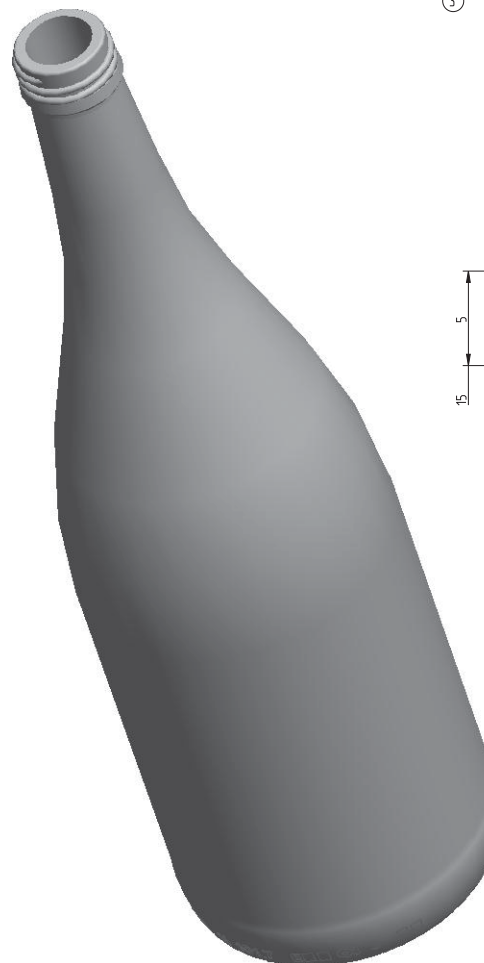
DIN 6094 - 7.5 R



This detail only serves for the approximation of the altitude of the filling machine. The brimfull capacity remains binding.



DETAIL A  
SCALE 5/1



O-I GLASSPACK GmbH & co. KG  
Goethestrasse 75  
40237 Düsseldorf, Germany  
Tel. +49 0211/2809-0  
+49 0211/932-0

CONTAINER & MOULD ENGINEERING  
**EUROPE**

NOTES:  
THIS DRAWING IS THE PROPERTY OF O-I AND MUST NOT BE REPRODUCED OR DISCLOSED WITHOUT O-I WRITTEN AUTHORIZATION.

ONLY TOLERANCED DIMENSIONS ARE GUARANTEED.

MANUFACTURING MARKINGS SHOWN ARE FOR ILLUSTRATIVE PURPOSES ONLY. ACTUAL MARKINGS ON CONTAINER MAY DIFFER. DEPENDANT ON LOCAL LEGISLATION.

CATEGORY WINE		TILT ANGLE 20.55°	
MAX. VERTICALITY TOLERANCE ± 3.4 mm		MEASURING CONTAINER YES	
FINISH SAP NUMBER 4232		FINISH REF. DIN 6094 / 12 1995	
MINIMUM THROUGH BORE 16.0 mm		MAX FILLING TUBE Ø 14 mm	
CONTAINER OVERFLOW CAPACITY (BRIMFUL) 1017ml ± 10ml			
CONTAINER RATED CAPACITY (FILLPOINT) 1000ml			
CONTAINER WEIGHT 390g APPROX.			
FINISH DESIGNATION DE_28_DIN 6094 / 12_H146_4232		MAX GAS VOLUME	
PROCESS NNPB	RETURNABLE NO	DESIGN REF. 090573 / W-7340	

several customers  
**11 WEINFLASCHE**

DESIGNER	J.B.	DATE	08.11.2010
CHECKED	S.Mo.	DATE	09.11.2010

<b>DRAWING NUMBER</b> 100867	<b>MOULD/SAP NUMBER</b> 100867
---------------------------------	-----------------------------------

1 = TRADEMARK  
2 = CAVITY No.  
3 = STIPPLING  
THE SHAPE OF STIPPLES IS ONLY AN INDICATION AND THE CONSTRUCTION IS AT THE PRODUCTION PLANT DISCRETION.  
4 = CAVITY CODE

SCALE 1:1

No	DATE	REVISIONS	DESIGN/CHECK